

Flavor Burst® FROZEN CARBONATED BEVERAGE

THE PRODUCT

MULTI-FLAVORED TREATS, FROM A SINGLE FREEZER BARREL

- Offer up to 8 different flavors with one unit.
- Select multiple flavors for new or favorite combinations such as blue raspberry, cherry, strawberry-lemon, or a rainbow swirl! With 8-flavors, there are hundreds of possible combinations.
- Compatible with a variety of freezer models and bases, such as cola, lemon-lime and neutral bases.

ONE-STEP PROCESS

- Simply select as few or as many flavors as you like from the Color Touch Panel menu, and you are ready to draw the serving!
- Delicious flavors are blended throughout the base product as it dispenses, automatically changing from one flavor to the next with no additional steps.

FLAVOR BURST SYRUPS

- The syrups are specially formulated for Flavor Burst systems and are concentrated to give each serving that perfect burst of flavor.
- Each syrup is packaged in easy-to-install 1-gallon bags with an 16-month shelf life.
- No refrigeration is needed.
- Each gallon bag yields up to 240 16-oz servings*. That's 1,920 FCB servings* just from your first 8 flavors! (*based on 16-oz. serving size)
- 30 delicious flavors to choose from. With classics such as cherry and blue raspberry, to bold flavors like green apple, mango, and watermelon, Flavor Burst syrups provide variety to keep your menu selection fresh, colorful and exciting.



FROZEN CARBONATED BEVERAGES

For pricing, availability, and ordering, please contact your local Taylor distributor. To find one near you, visit www.taylor-company.com
For other general questions or to learn about even more Flavor Burst flavoring systems, call 800-264-3528 or visit www.flavorburst.com.

© 2015 Flavor Burst Company. All Rights Reserved. Flavor Burst, Nice Ice, JavaLatte, Take A Shake Break, and CrunchiCreme are all registered trademarks of the Flavor Burst Company.



Flavor Burst® "CTP" FCB MODELS

THE EQUIPMENT



COLOR TOUCH PANEL

- Full-color, high resolution, touch-sensitive 10" screen
- Upload videos, pictures, logos and graphics
- Customize flavor names, icons, container sizes, and product pricing
- Easy self-serve mode with portion control
- Dimensions: 10.25 x 6.75 x 1.25 in (261 x 172 x 32 mm)

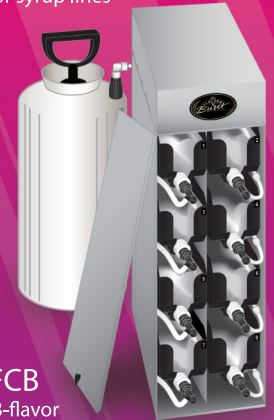
MANUAL DRAW SPOUT ASSEMBLY



- Standard with Flavor Burst CTP FCB systems
- Delivers flavors directly to the spout opening
- Easy to install and operate
- Standard manual draw lever with magnetic pin to activate the switch
- Adapter kits available for a variety of freezer models
- Adjustable flow rate

CABINET FEATURES

- Five models with different stainless steel cabinet styles
- Light-weight trays to hold the bags of syrup
- Easy to connect and disconnect syrup lines
- Sanitizer tank that provides clean-in-place sanitation for syrup lines



CTP 80FCB

- Standard 8-flavor tall and narrow cabinet
- Large 3-gallon external sanitizer tank



CTP 40FCB-JR

- 4-flavor mini cabinet
- 2-gallon external sanitizer tank
- Designed to fit in small cabinets and spaces
- Fits inside the Taylor C201 mobile cart (Taylor C201 cart sold separately)

CTP 80FCB-DLX

- Shorter, wider 8-flavor cabinet with sliding door front
- 2-gallon internal sanitizer tank
- External power supply mounted on the back panel
- Electronics Box size: 9.5 x 3.5 x 19 in (241 x 89 x 483 mm)



Optional Upgrade!

AUTO DRAW VALVE KIT

- Part Number ADPT TY80-FCB1TS
- Alternate draw system where serving is drawn with the push of a button
- Auto shut-off with timed serving sizes
- Auto Draw Valve Kit sold separately

Fits Inside Taylor C201!



CTP 80FCB-INT

- Integrated 8-flavor cabinet designed to fit within the Taylor C201 cart (Taylor C201 cart sold separately)
- 2-gallon internal sanitizer tank

Fits inside the C206 Carts!



CTP 80FCB-INT-2S

- Integrated 8-flavor cabinet designed to fit within the Taylor C206 mobile carts (Taylor C206 carts sold separately)
- 2-gallon external sanitizer tank

MODEL	CABINET width x height x depth	SANITIZER TANK width x height x depth	BOXED DIMENSIONS width x height x depth total cubic	BOXED WEIGHT	CRATED WEIGHT	ELECTRICAL	MIN. CIRCUIT AMP DRAW
CTP 80FCB	9.75 x 31.375 x 27.25 in 248 x 797 x 692 mm	8.25 x 24 x 8.25 in 210 x 610 x 210 mm	12 x 34.5 x 35 in 305 x 876 x 889 mm .10 cu. ft	110 lbs 49.9 kg	143 lbs 64.9 kg	115v 50/60Hz 230v 50/60Hz	1 1/2
CTP 80FCB-DLX	17 x 22.75 x 28.125 in 432 x 578 x 714 mm	N/A inside cabinet	26.5 x 29.25 x 18.75 in 674 x 743 x 477 mm .24 cu. m	133 lbs 60.3 kg	166 lbs 75.3 kg	115v 50/60Hz 230v 50/60Hz	1 1/2
CTP 80FCB-INT (Taylor cart not included)	14.375 x 18.25 x 27.5 in 365 x 464 x 699 mm	N/A inside cabinet	26.5 x 29.25 x 18.75 in 674 x 743 x 477 mm .24 cu. m	100 lbs 43.4 kg	133 lbs 60.3 kg	115v 50/60Hz 230v 50/60Hz	1 1/2
CTP 80FCB-INT-2S (Taylor cart not included)	19.5 x 13.25 x 24.5 in 496 x 337 x 623 mm	6 x 7.5 x 19 in 152 x 191 x 483 mm	21.5 x 21.25 x 26.75 in 546 x 540 x 680 mm .20 cu. m.	89 lbs 40.4 kg	122 lbs 55.3 kg	115v 50/60Hz 230v 50/60Hz	1 1/2
CTP 40FCB-JR (Taylor cart not included)	11.75 x 17.5 x 26.875 in 299 x 445 x 683 mm	6 x 7.5 x 19 in 152 x 191 x 483 mm	12 x 34.5 x 35 in 305 x 876 x 889 mm .10 cu. m.	85 lbs 38.6 kg	118 lbs 53.6 kg	115v 50/60Hz 230v 50/60Hz	1 1/2